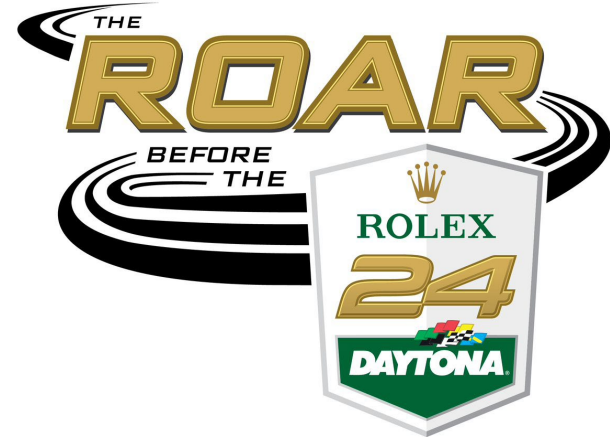




2026 EVENT MAPS



» TO IMSA TRANSPORTER STAGING

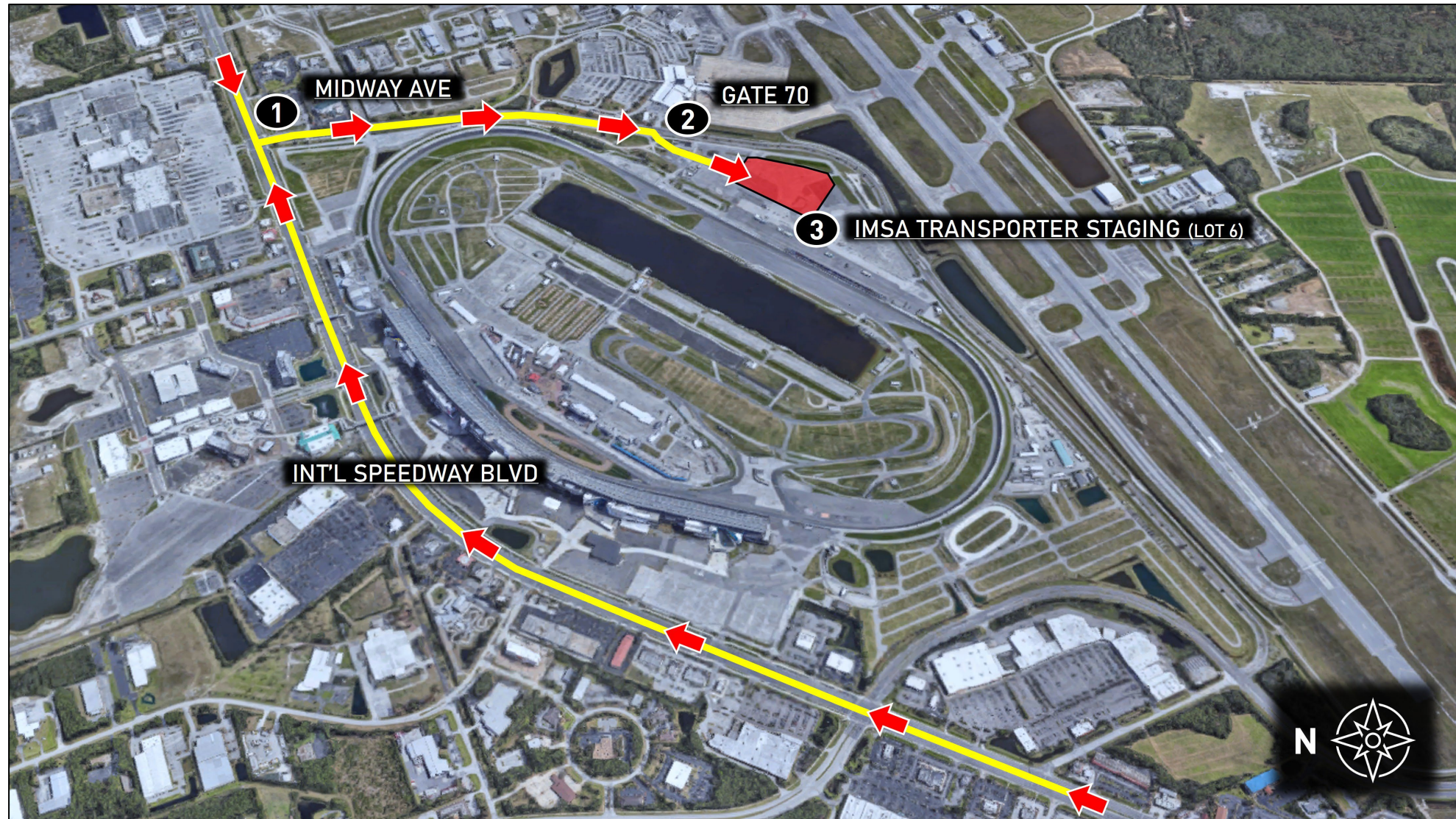


Directions

1. Take Int'l Speedway Blvd to Midway Ave. At light, turn onto Midway Ave
2. Enter track at Gate 70 and proceed to Lot 6 (paved lot between backstraight & airport)
3. Proceed to IMSA Transporter Staging area in Lot 6 (red shaded area)

Notes

- Pre-Staging and Staging available in Lot 6
- Refer to Official Schedule / SR for detailed Staging and Load-In instructions / times



» TO IMSA REGISTRATION (VIA BILL FRANCE BLVD)

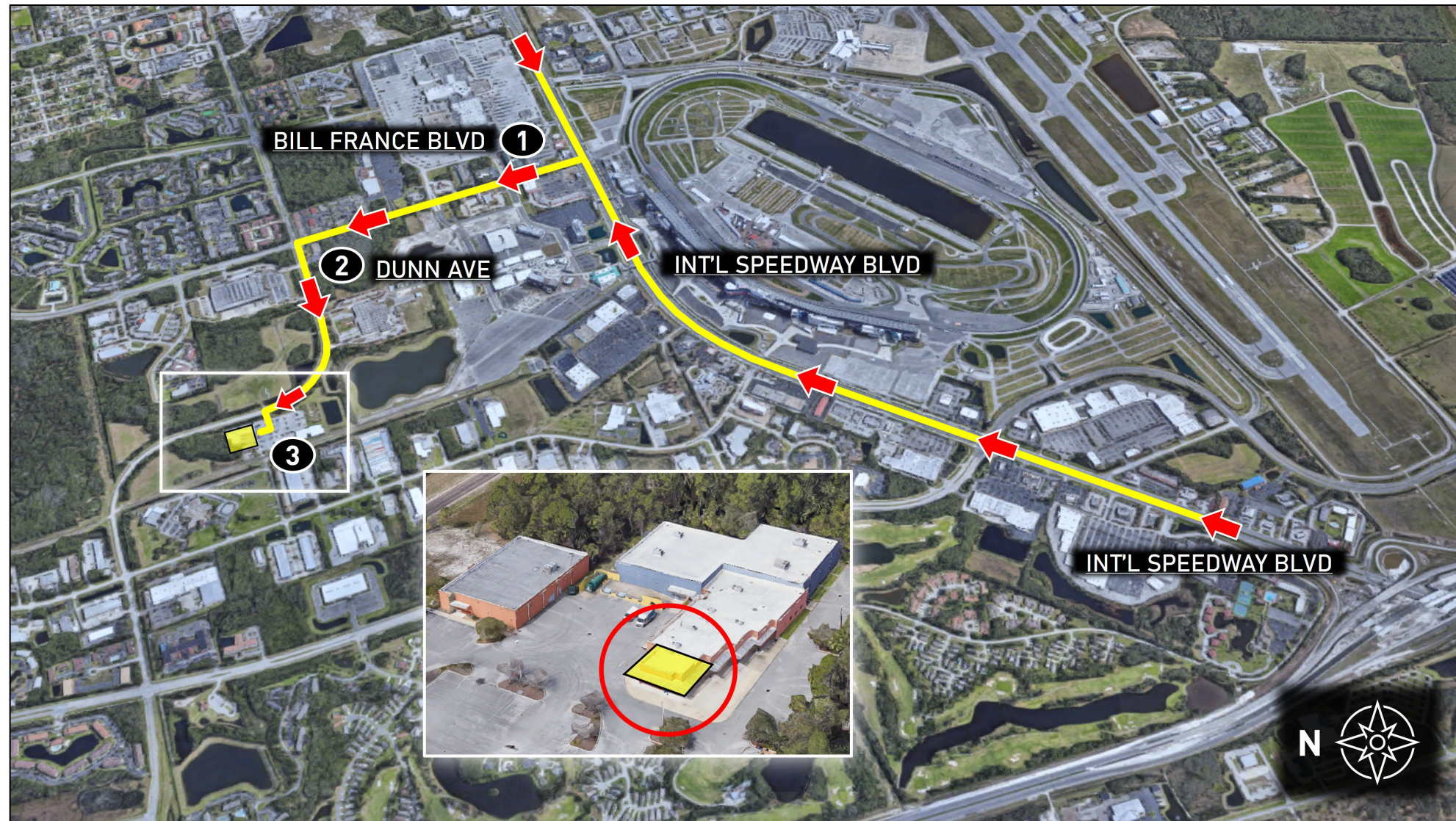


Directions

1. Take Int'l Speedway Blvd to Bill France Blvd. At light, turn onto Bill France Blvd
2. At light, turn left onto Dunn Ave
3. Turn left to enter Daytona Credentials location and follow signage for IMSA Registration (Door #1, yellow shaded area)

Notes

- Address: 2013 Dunn Avenue, Daytona Beach, FL 32114
- Refer to Official Schedule / SR for Registration hours
- Please use caution as route passes through School Zone



» TO IMSA REGISTRATION (VIA WILLIAMSON BLVD)

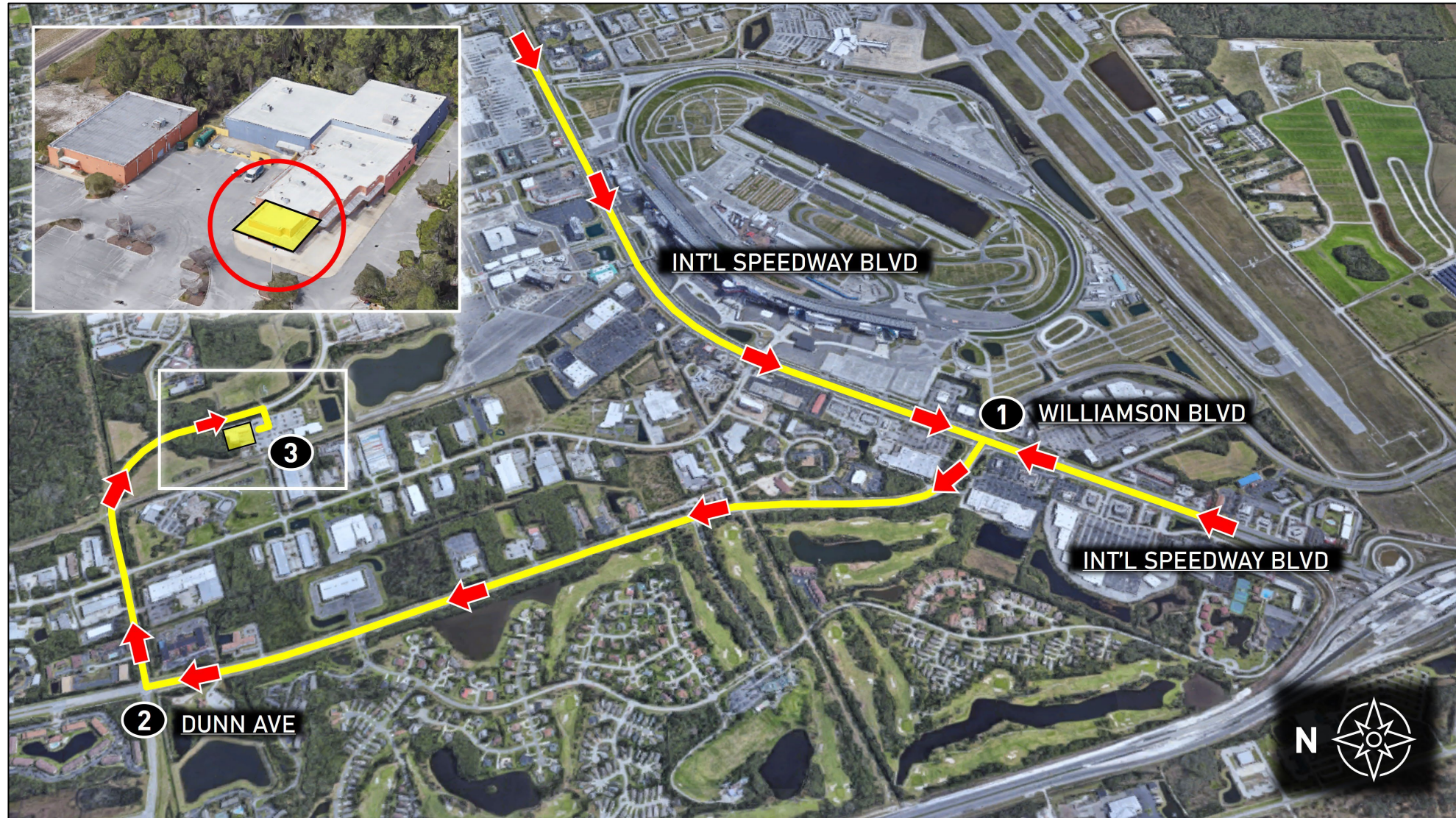


Directions

1. Take Int'l Speedway Blvd to Williamson Blvd. At light, turn onto N Williamson Blvd
2. At light, turn right onto Dunn Ave
3. Turn right to enter Daytona Credentials location and follow signage for IMSA Registration (Door #1, yellow shaded area)

Notes

- Address: 2013 Dunn Avenue, Daytona Beach, FL 32114
- Refer to Official Schedule / SR for Registration hours



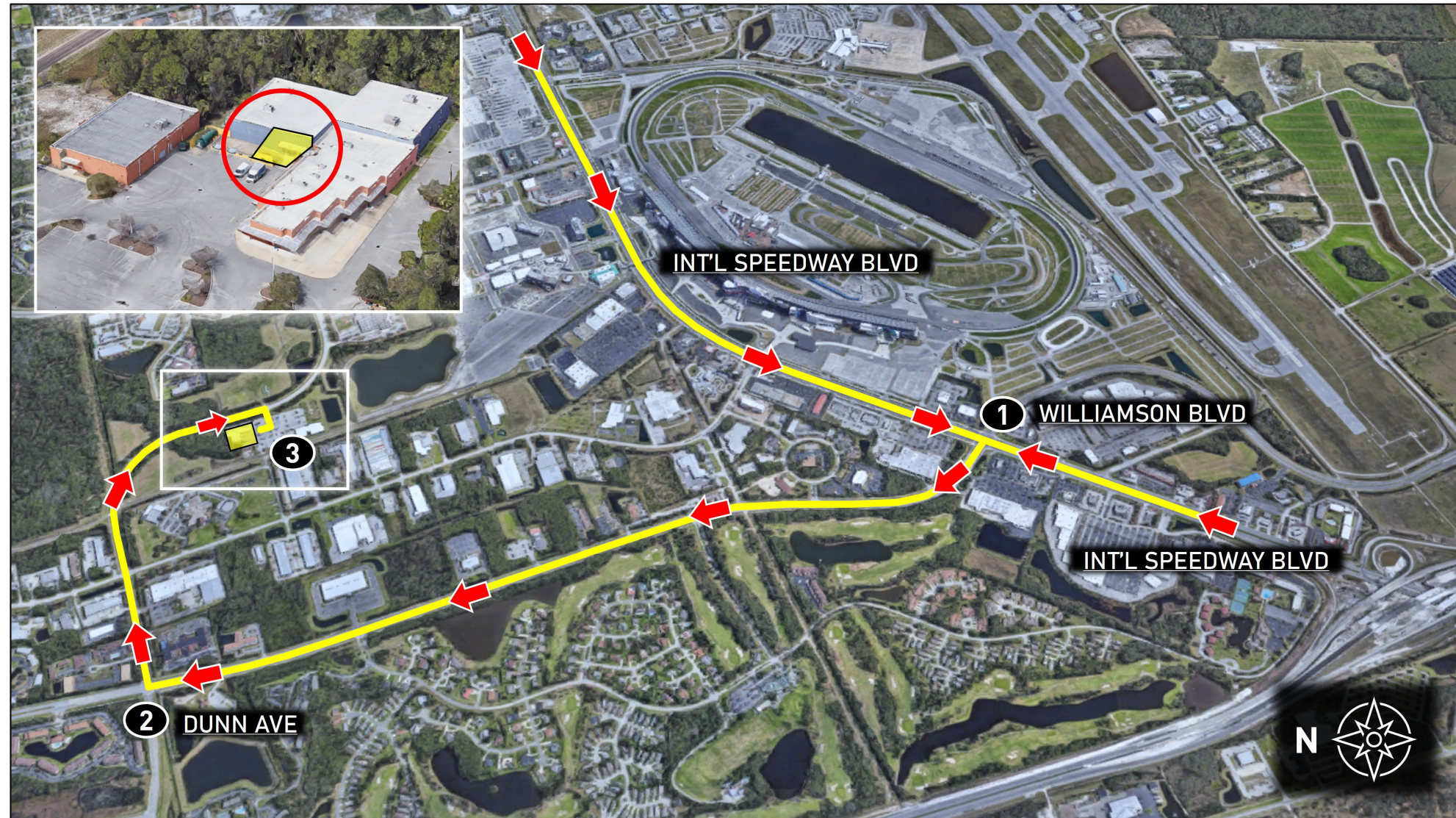
» TO DIS MAILROOM

Directions

1. Take Int'l Speedway Blvd to Williamson Blvd. At light, turn onto N Williamson Blvd
2. At light, turn right onto Dunn Ave
3. Turn right to enter Daytona Credentials location and follow signage for DIS Mailroom (yellow shaded area)

Notes

- Address: 2013 Dunn Avenue, Daytona Beach, FL 32114
- Refer to Official Schedule / SR for Mailroom hours



» TO IMSA INFIELD PARKING (1/15 - 1/21)

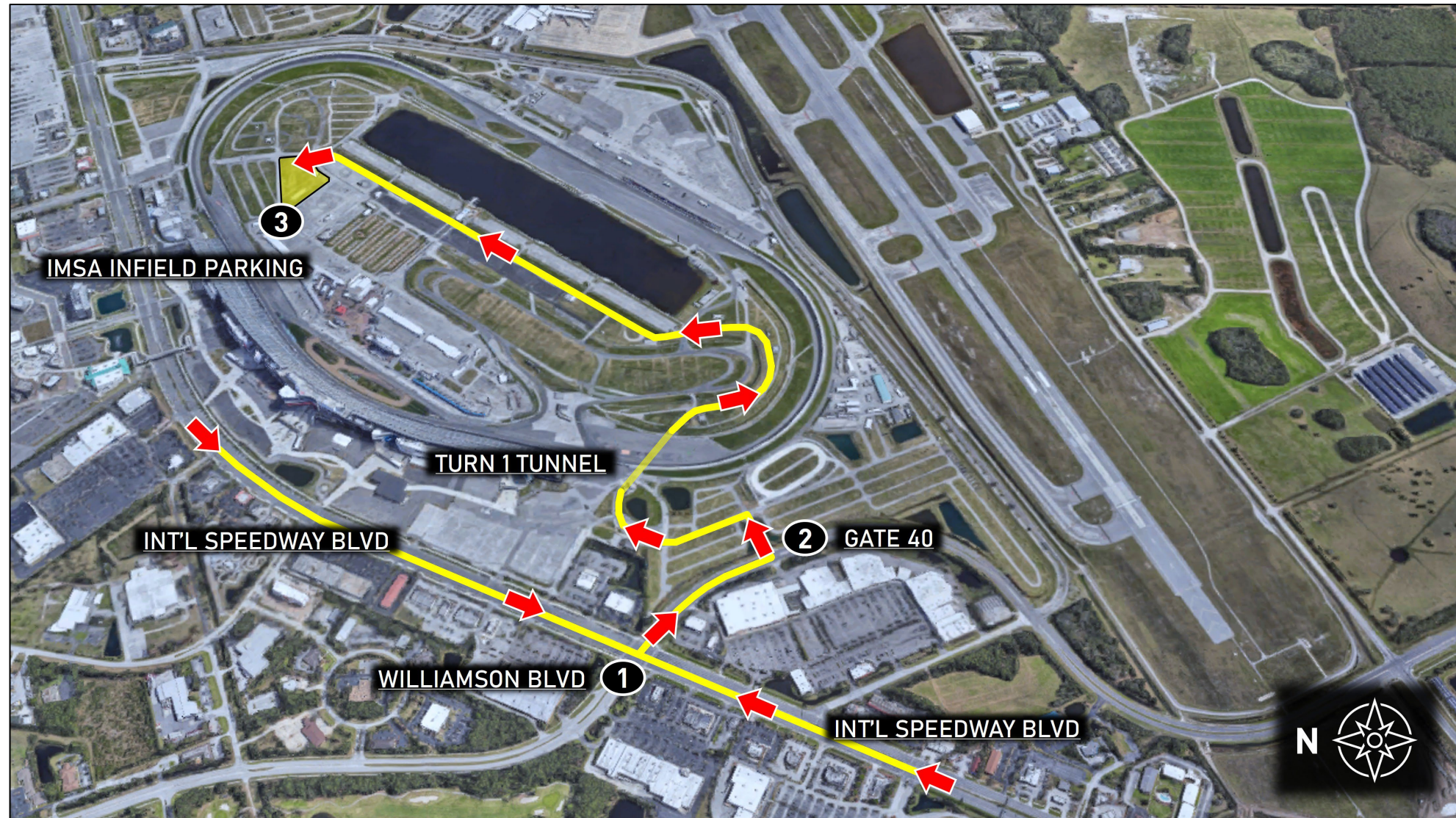


Directions

1. Take International Speedway Blvd to Williamson Blvd. At light, turn onto S. Williamson Blvd
2. Turn left and enter track at Gate 40. Upon track entry, proceed through Turn 1 tunnel
3. Park in designated IMSA Infield Parking area (yellow shaded area)

Notes

- IMSA Annual Hangtags accepted for Infield Parking access through Wed., 1/21
- Track parking pass required from Thu., 1/22 - Sun., 1/25
- Proper credentials required for facility entry



» TO IMSA LOT 4 PARKING (1/15 - 1/21)

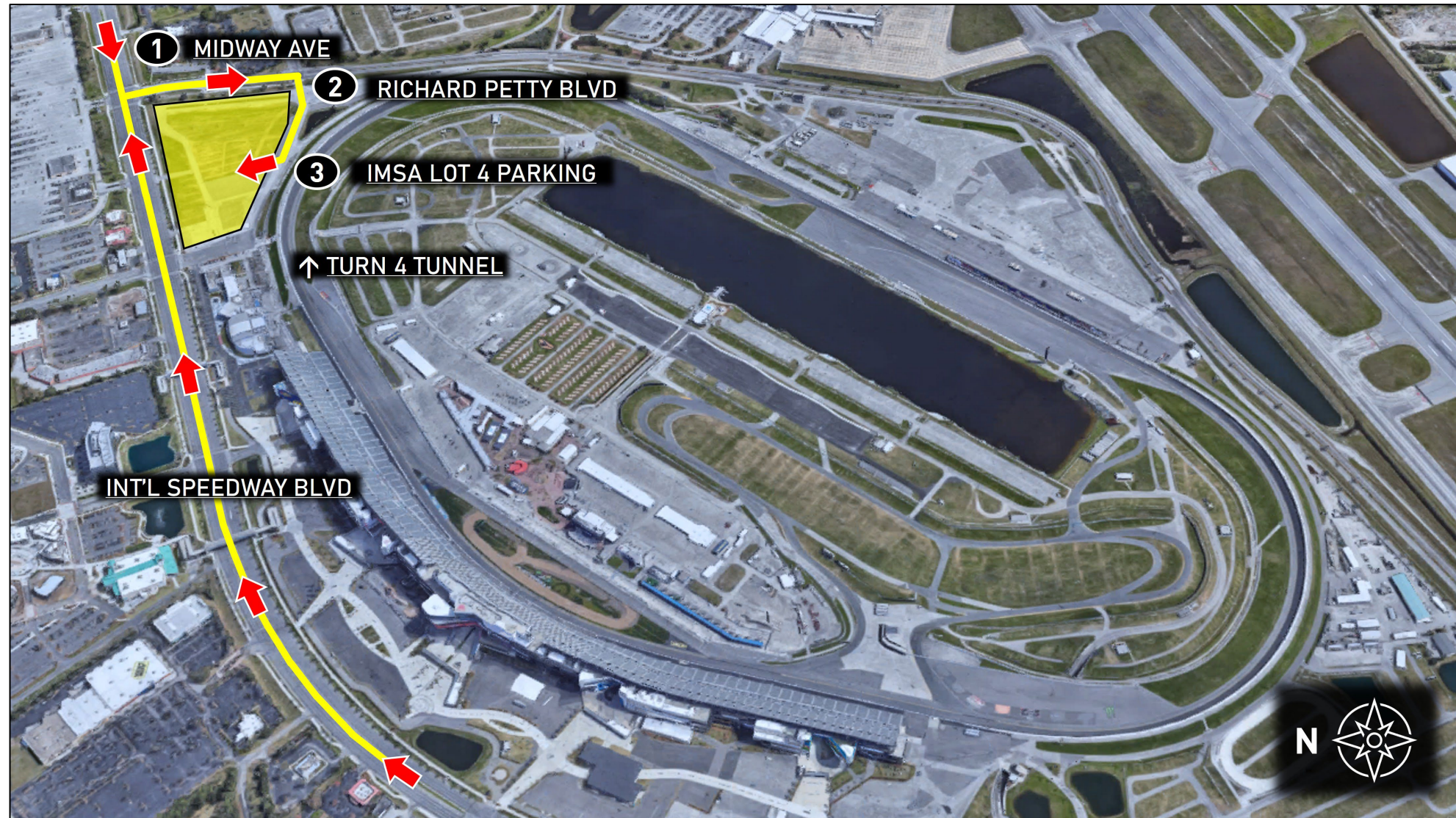


Directions

1. Take Int'l Speedway Blvd to Midway Ave. At light, turn onto Midway Ave
2. Proceed on Midway Ave. At light, turn right on Richard Petty Blvd to enter track
3. Park in designated IMSA Lot 4 Parking area (yellow shaded area)

Notes

- IMSA Credentials accepted for Parking access through Wed., 1/21
- Lot is not available from Thu., 1/22 - Sun., 1/25
- Infield and Paddocks can be accessed through Turn 4 Tunnel
- Proper credentials required for facility entry



» TO IMSA INFIELD PARKING (1/22 – 1/25)

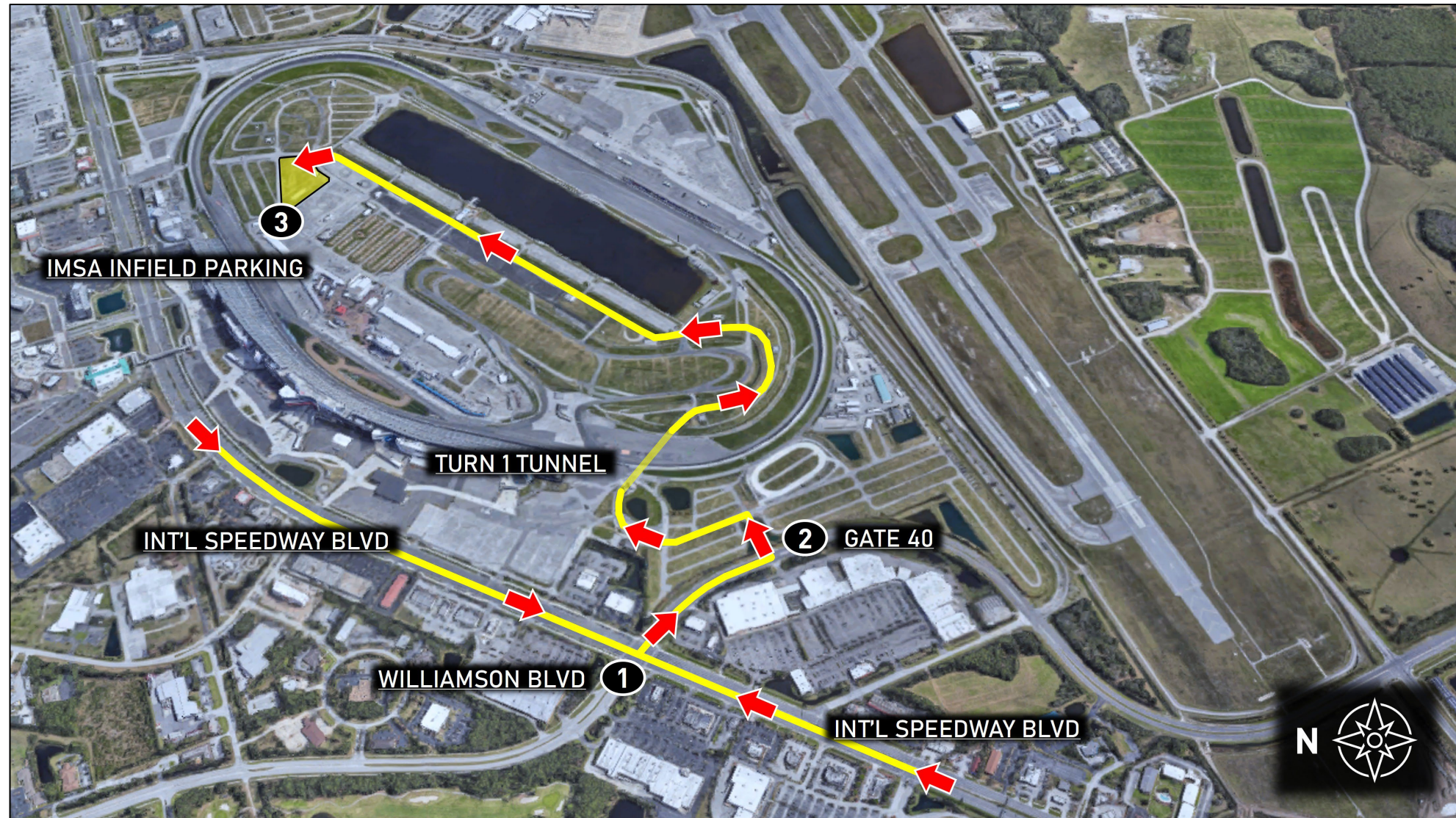


Directions

1. Take International Speedway Blvd to Williamson Blvd. At light, turn onto S. Williamson Blvd
2. Turn left and enter track at Gate 40. Upon track entry, proceed through Turn 1 tunnel
3. Park in designated IMSA Team Parking area (yellow shaded area)

Notes

- DIS Infield parking pass required
 - IMSA Hangtags will not grant infield parking access
- Proper credentials required for facility entry



» TO IMSA LOT 6 PARKING (1/15 – 1/25)

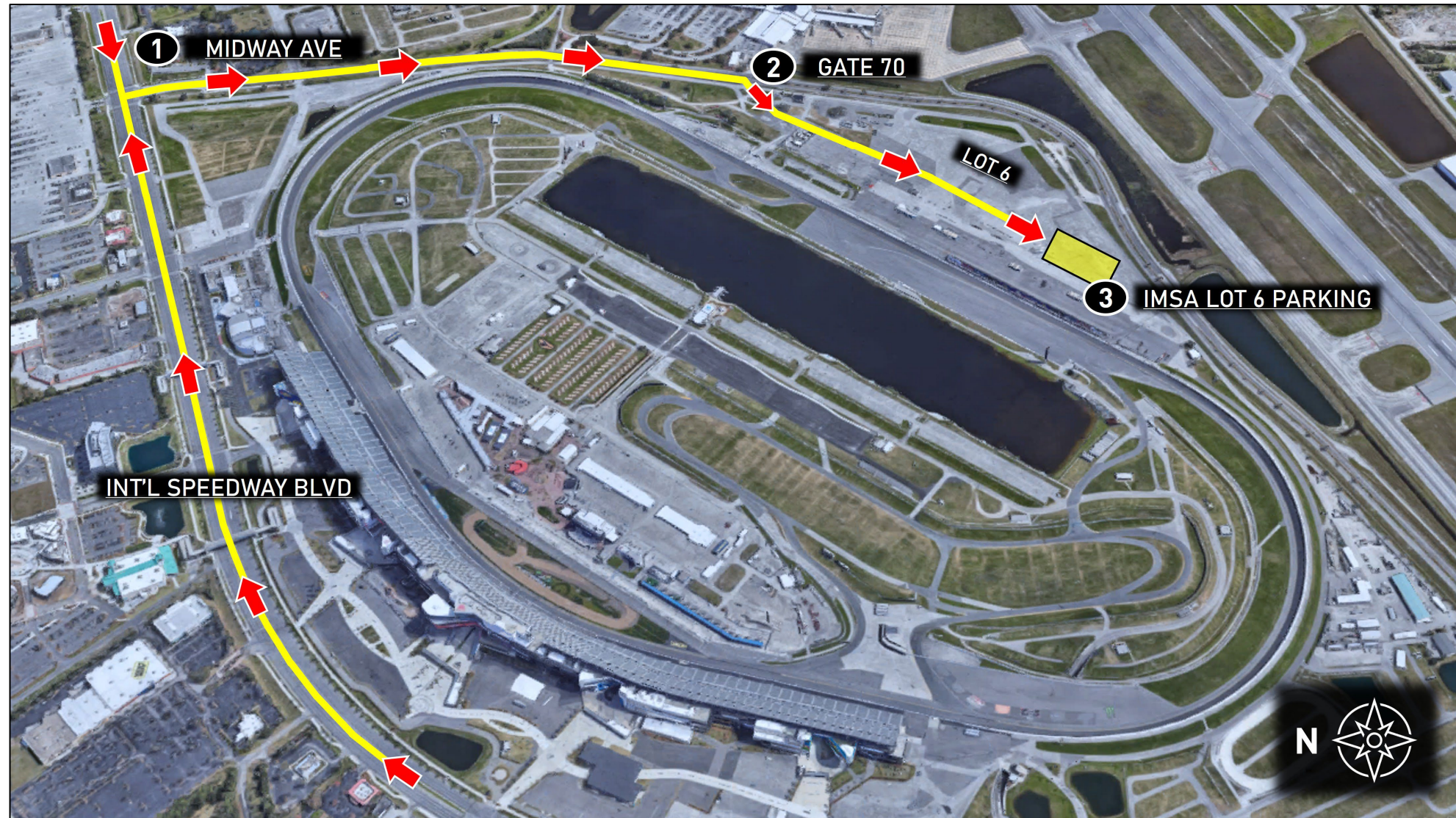


Directions

1. Take Int'l Speedway Blvd to Midway Ave. At light, turn onto Midway Ave
2. Enter track at Gate 70 and proceed to Lot 6
3. Continue across Lot 6 and park in designated IMSA Team Parking area (yellow shaded area)

Notes

- IMSA Annual Hangtags or DIS Lot 6 parking passes required
- Refer to Official Schedule / SR for detailed Tram schedule to Infield

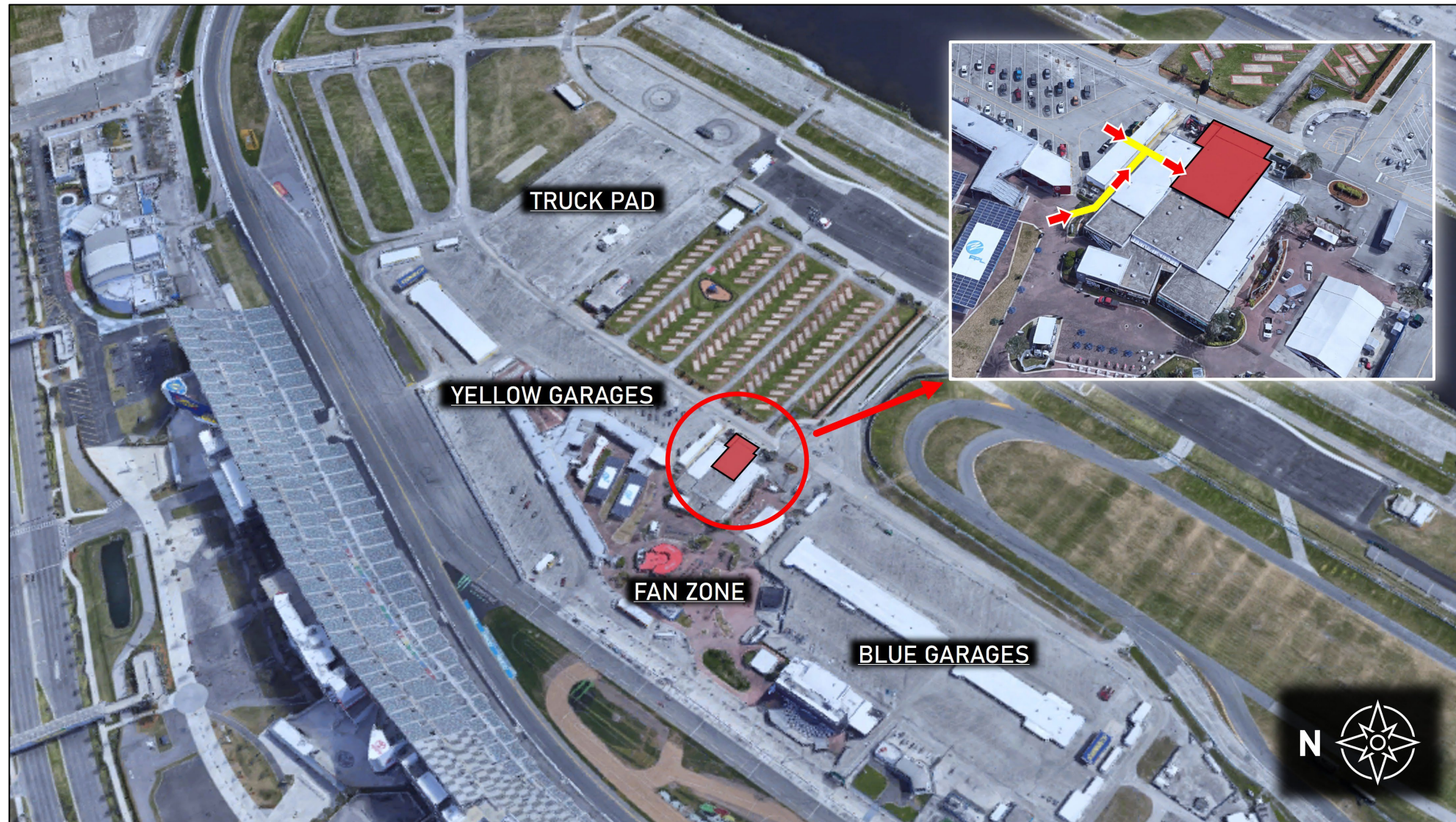


» TRACK MEETING ROOM



Notes

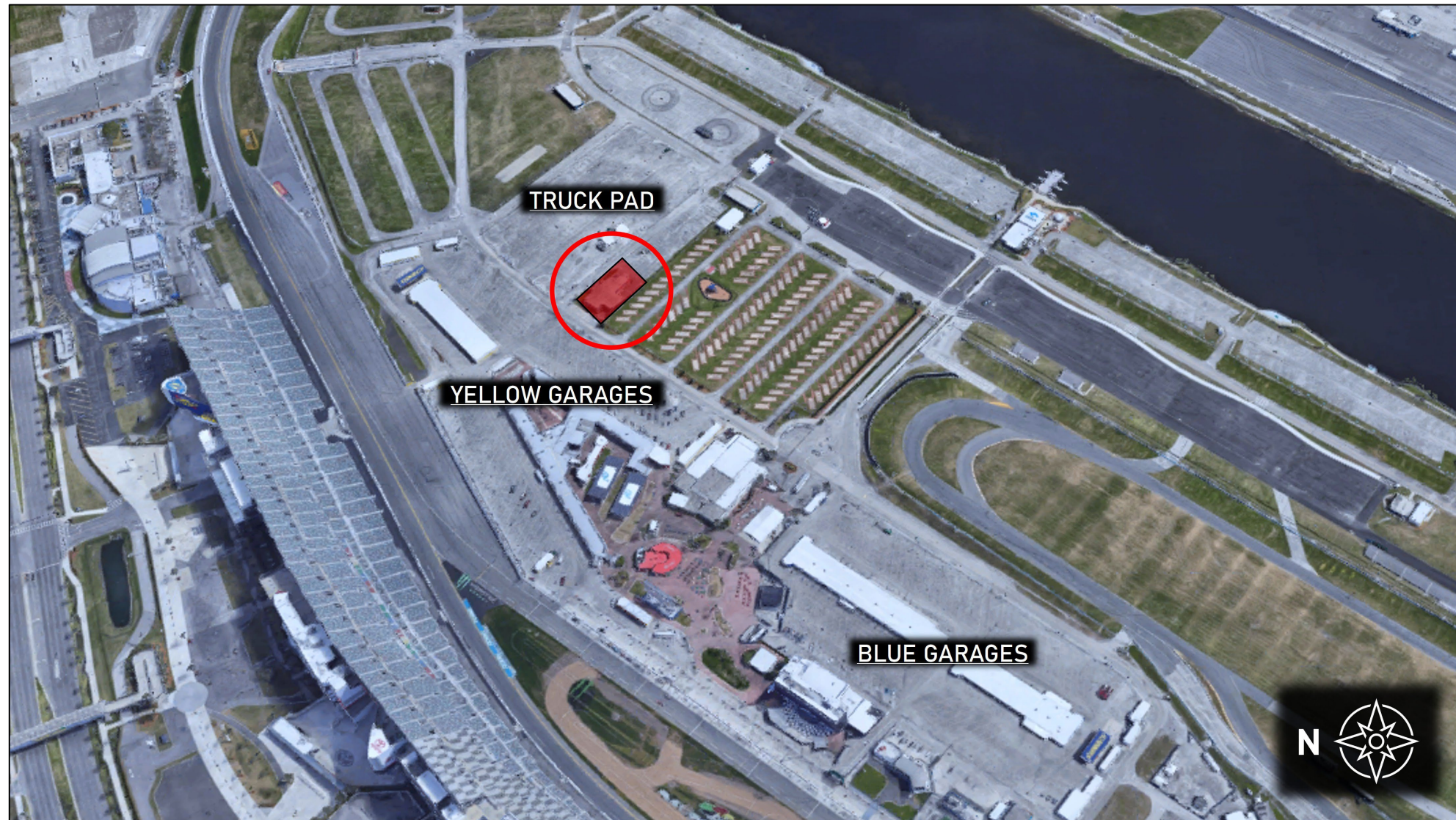
- Track Meeting Room located in Media Center building complex: South of Yellow Garages (red shaded area)
- Enter Track Meeting Room through side door closest to Yellow Garage (see inset photo)
- See Official Schedule / SR for Briefing times



» CARE CENTER LOCATION

Notes

- Care Center located adjacent to Yellow Garages; between D/O Lot and Truck Pad
- See Official Schedule / SR for Care Center hours

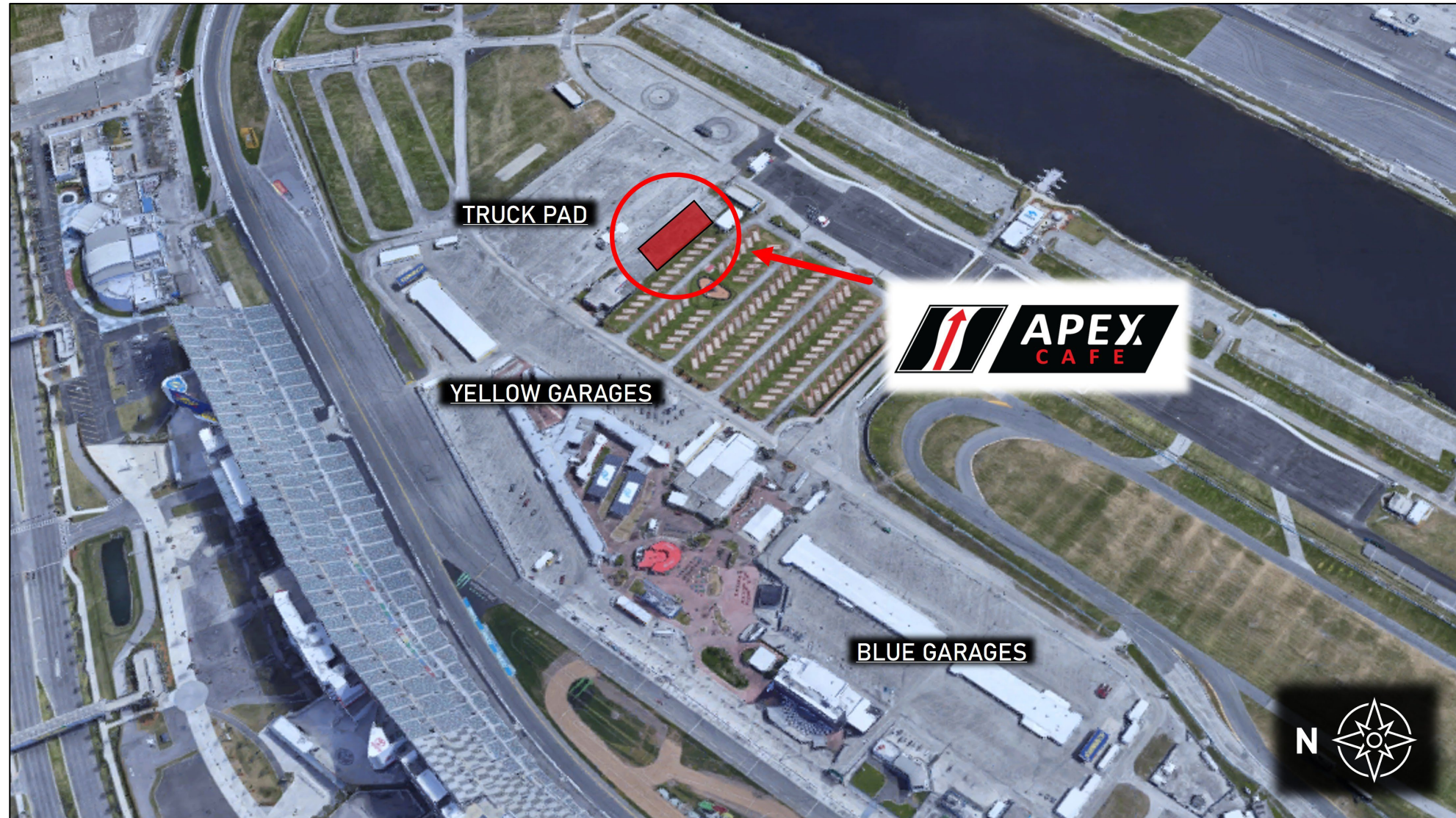


» APEX CAFÉ LOCATION



Notes

- Tent located south of Infield Care Center, between D/O Lot and Truck Pad
- Contact Kaitlin Scheper for more information (contact info located in Official SR "General Event / Track Info" section #5)



» SPOTTER ROUTE

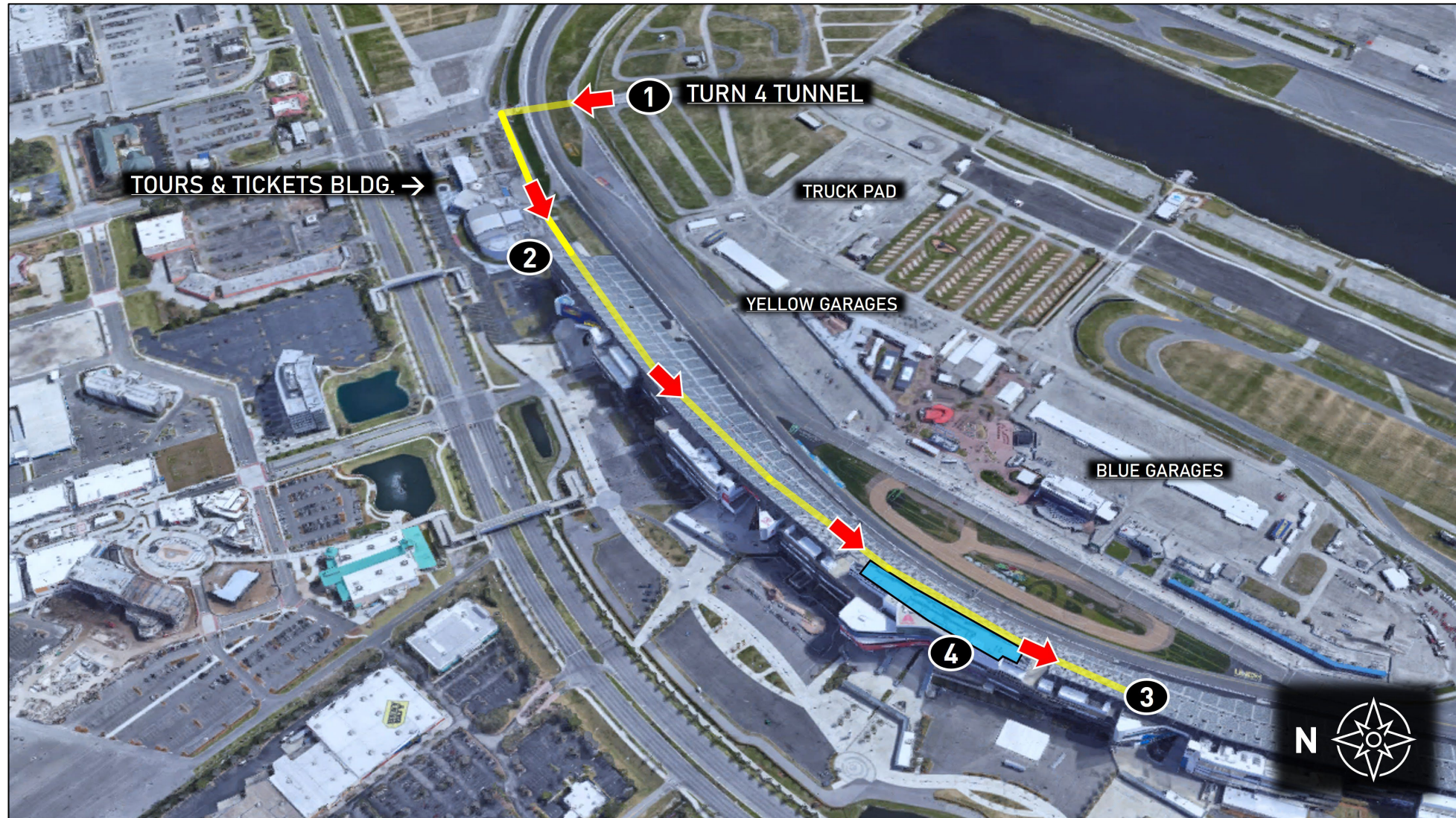


Directions

1. Exit Infield via Turn 4 Tunnel. Take access road behind Tickets & Tours building
2. Proceed under stadium on service drive ("RF" sticker required for entry)
3. Park in reserved spotter area under stadium (spaces 82 - 92 on service drive)
4. Take stairwell to lower level then service elevator to spotters' area on roof (blue shaded area)

Notes

- Parking will be strictly enforced; park in aforementioned reserved spotter area
- "RF" (roof access) sticker required for spotter area access



» DRIVER / OWNER COACH LOT LOCATIONS

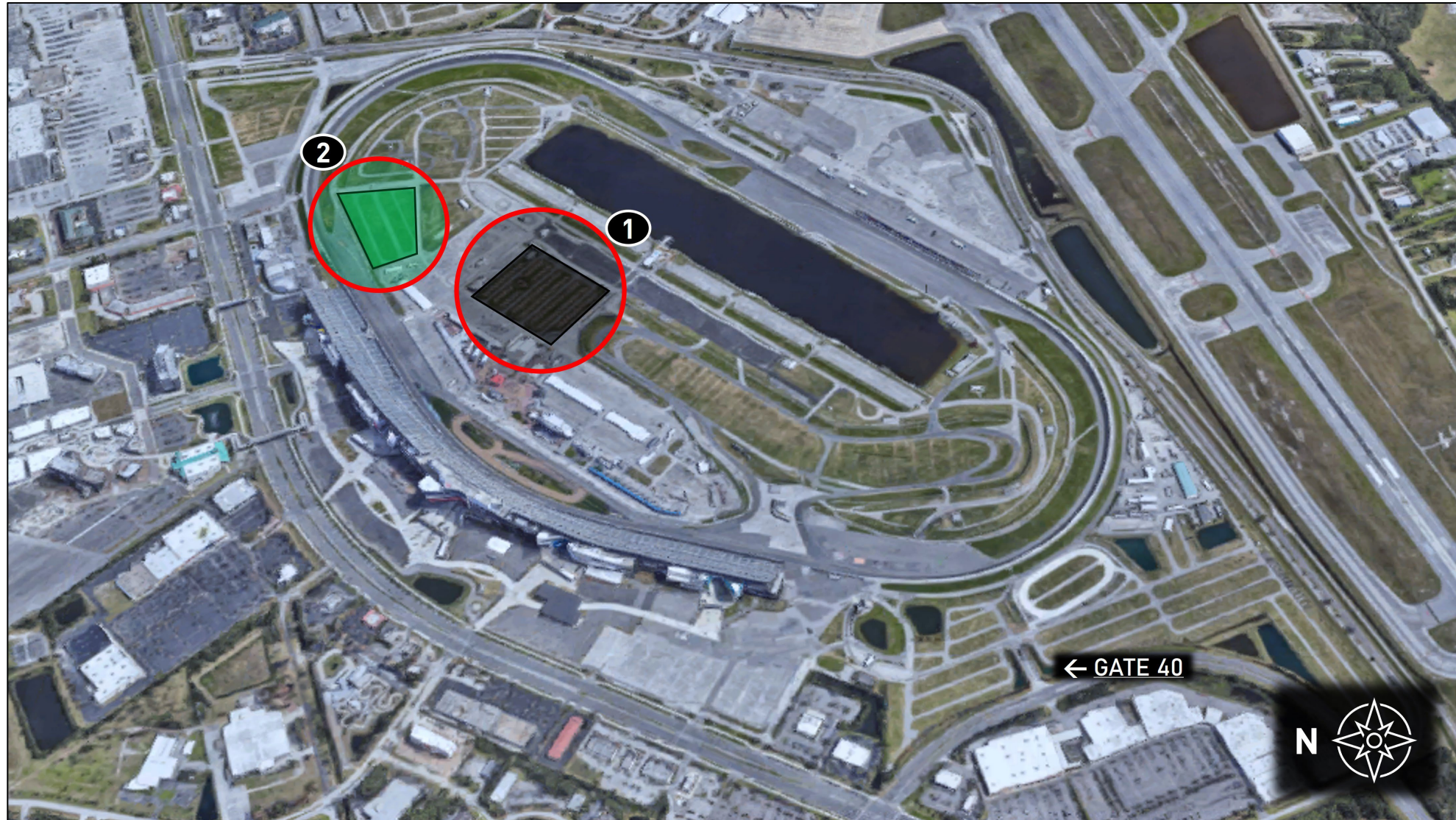


Locations

1. Primary Driver/Owner Lot
2. Green Driver/Owner Lot

Notes

- Coaches to enter at Gate 40 with proper credentials & parking passes
- Coach load-in begins on Wed., 1/14
- All Coaches must be parked by 12:00 PM on Wed., 1/21
- Coaches must vacate by 12:00 PM on Mon., 1/26



» TO PIT LANE (MAZDA MX-5 CUP)

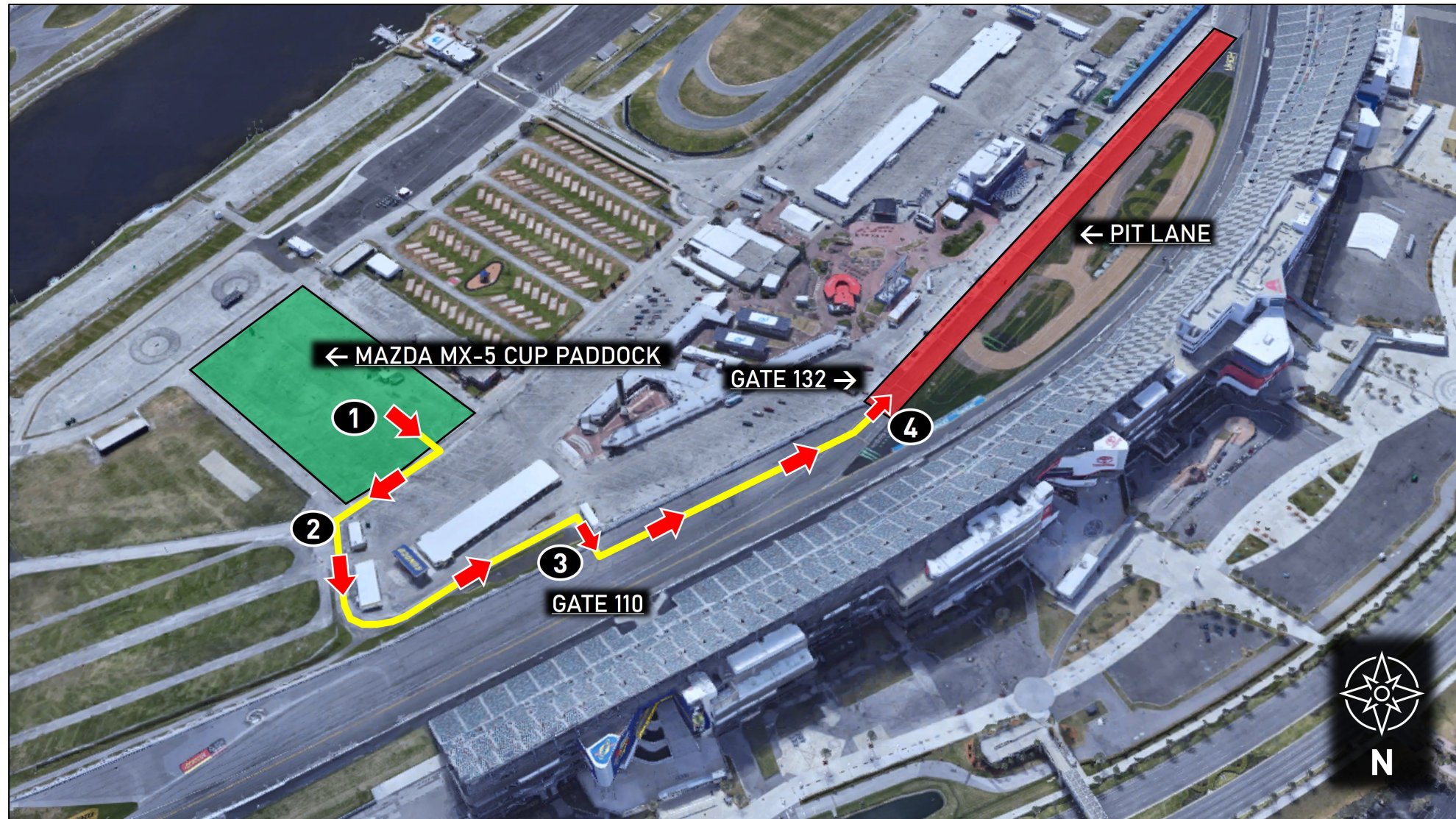


Directions

1. Exit paddock and turn drivers' right
2. Turn drivers' left to access perimeter paddock road - behind open WeatherTech Championship Garages and Building 200
3. Turn drivers' right to enter track via gate across from Open Garages (Gate 110)
4. Proceed to Pit Lane

Notes

- During sessions, cars must use Gate 132 (noted on map, closest to Pit In) and proceed through Yellow Garage to access MX-5 Cup paddock



» TO PADDOCK, POST-SESSION (MAZDA MX-5 CUP)

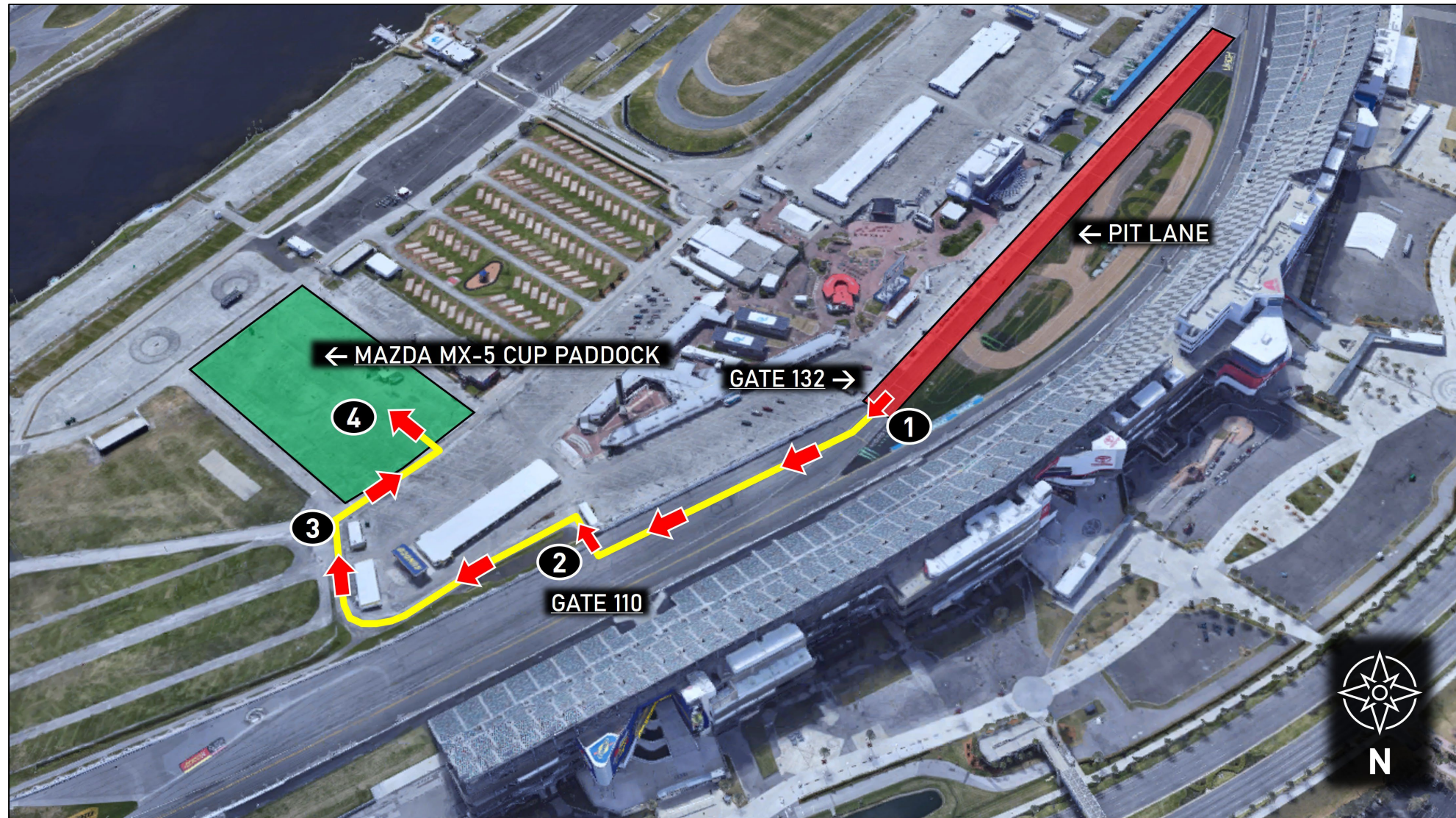


Directions

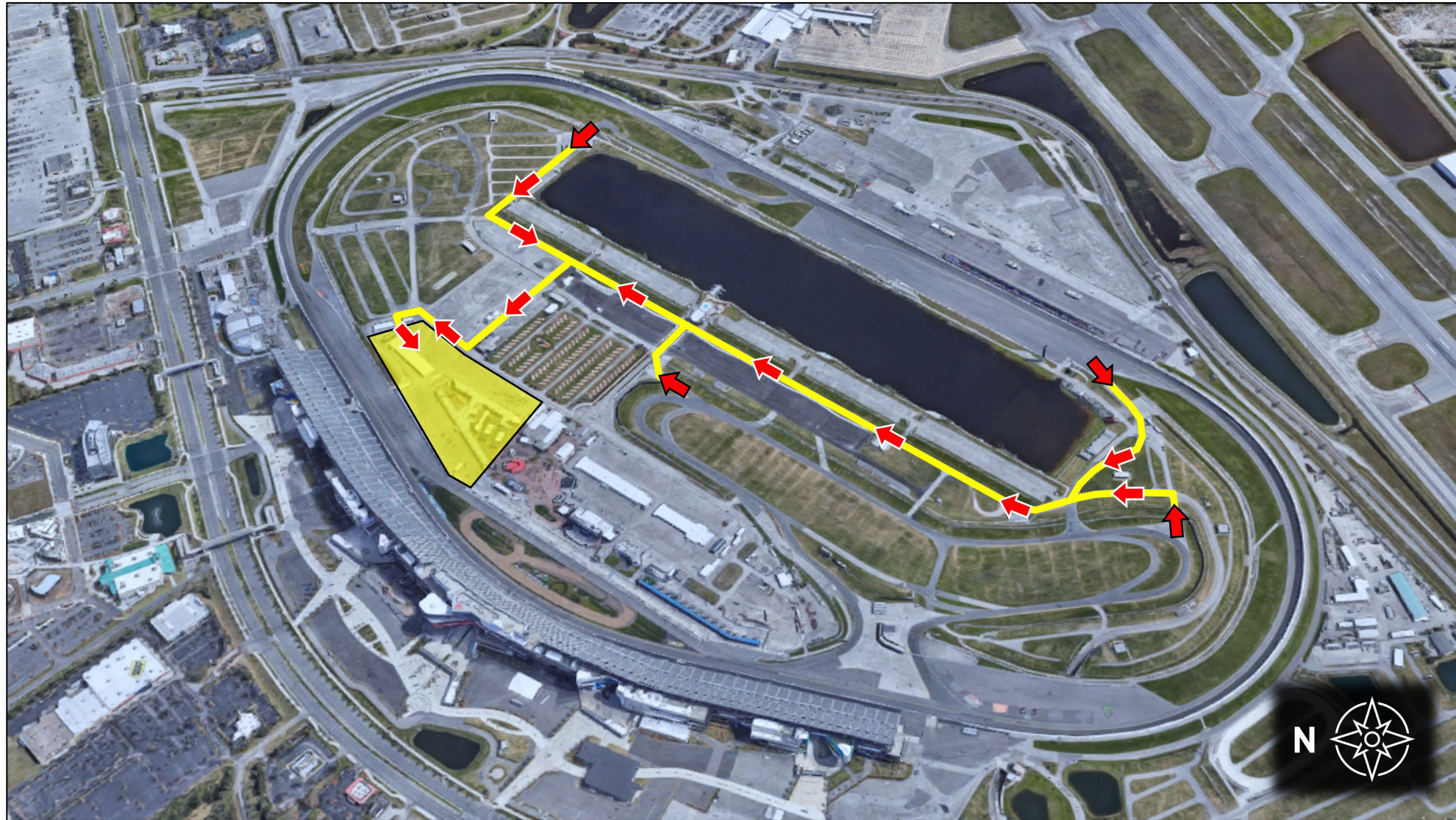
1. Proceed counter-course from Pit Lane
2. Turn drivers' right to exit track via gate across from Open Garages (Gate 110). Take immediate left to access perimeter paddock road
3. Continue along perimeter access road towards paddock entrance
4. Turn drivers' left to enter paddock

Notes

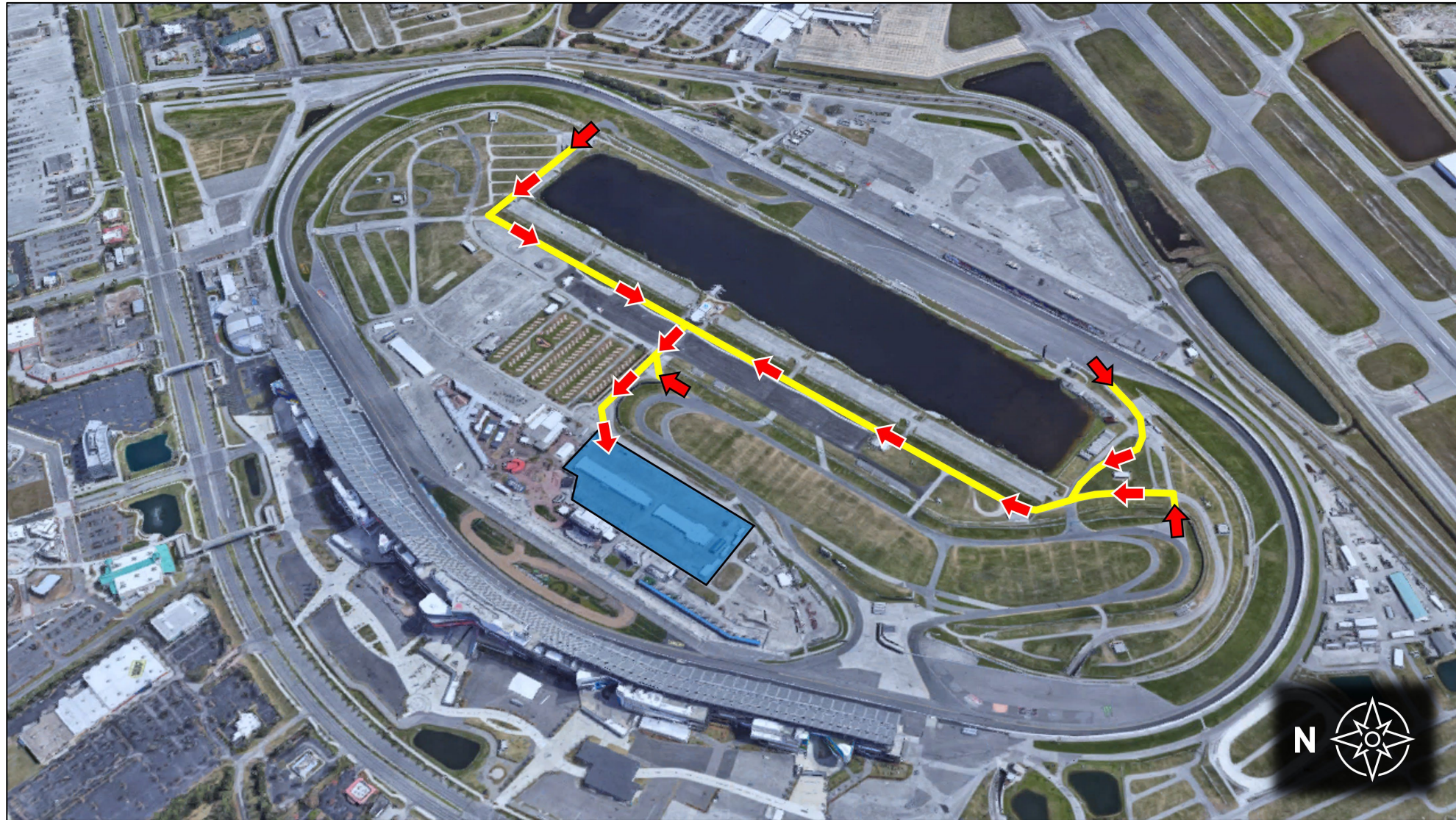
- During sessions, cars must use Gate 132 (noted on map, closest to Pit In) and proceed through Yellow Garage to access MX-5 Cup paddock



» DAMAGED CAR RETURN – YELLOW GARAGE



» DAMAGED CAR RETURN – BLUE GARAGE



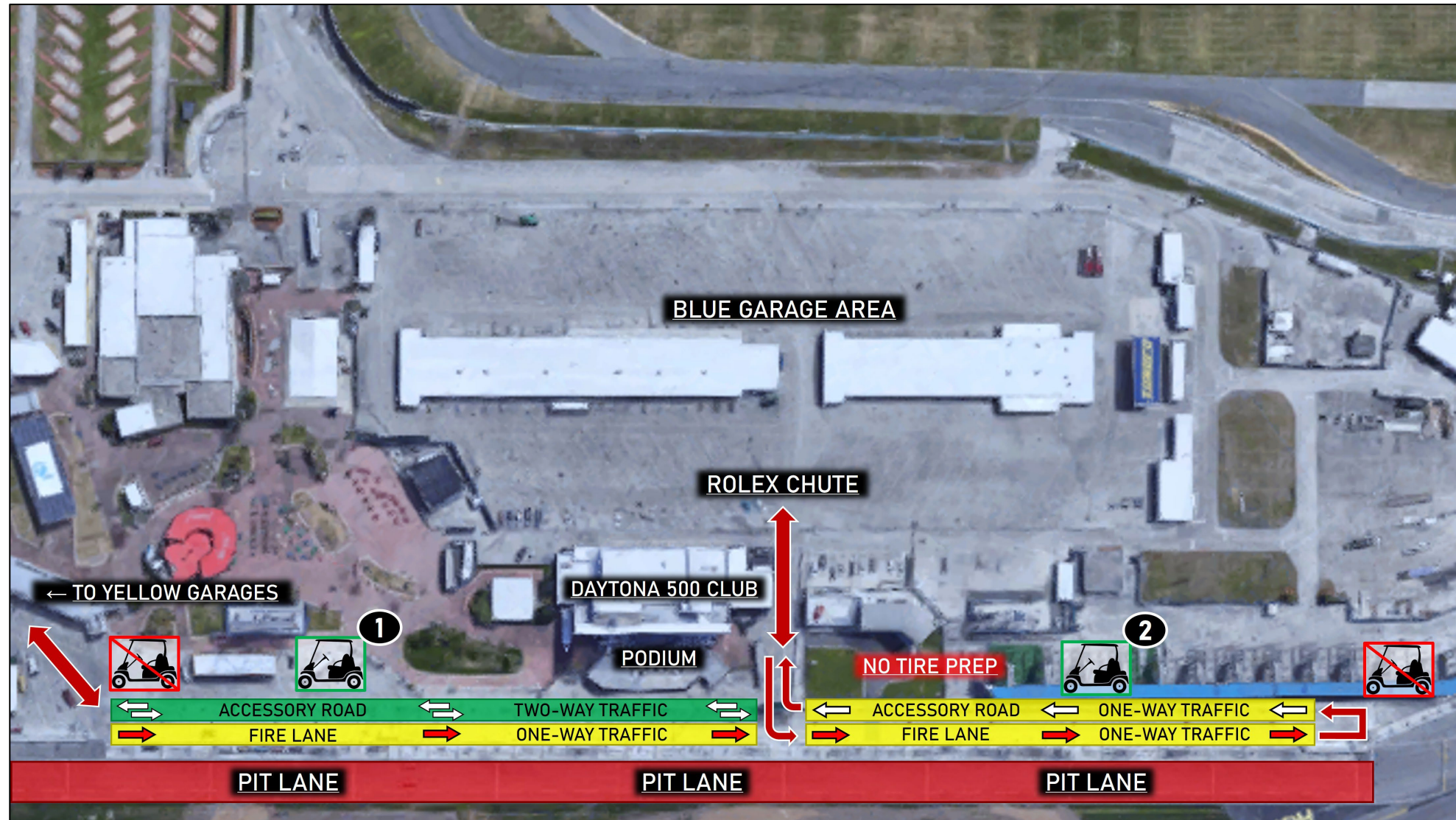
» PIT LANE FLOW

Directions

1. Parking is allowed. Must not block fire lane
 2. Parking is allowed along right side of Accessory Road only. Must not block fire lane
- Park only in your team's garage / paddock area or your team's pit lane footprint

Tire Prep

- Tire prep is prohibited at any location other than your team's garage / paddock area or within your pit box





2026 EVENT MAPS

